



FEET DESIGN<sup>®</sup>

# CONTENT

01 About Us

02 Portfolio

03 Testimonials

04 Services



## ABOUT US

360 Feet Design is a Mumbai-based practice that specializes in creating innovative and exquisite interior designs. We began our journey in a spare office room in 2004 when Mr. Shah took a leap of faith and founded 360 Feet Design.

Since then, we have built our reputation on seventeen years of designing beautiful interiors that exceed expectations, as well as spaces that inspire users. We handle everything from the initial stages of visualizing ideas to climbing ladders and watching the project come to life on the construction site.



## PRATIK SHAH, FOUNDER

Mr. Shah is a creative who believes in the power of beautiful designs to transform daily lives. With an Interior Design certification from L.S. Raheja and a well-trained eye for quality and craftsmanship, he continues to be recognized in the industry for his timeless designs that remain fresh year after year.

His passion for Interior Design comes from a life-long obsession with creating art. By the time he finished high school, he had already established himself as a prolific painter and illustrator, creating art commissions for high-profile clients.

His sense of style and obsession with quality drew the attention of one such client, who introduced him to the world of Interior Design. Intrigued with the art of creating beautiful spaces he entered the Interior Design scene in 2004 and has been leading the charge ever since.



## 360 FEET DESIGN TEAM

Our leadership team is composed of subject matter experts from different verticals of the design industry. Every dedicated team has been chosen carefully for their ability to innovate & deliver within the parameters set by our clients.

We take great pride in our people, the true pillars of our organization. Our employees are our family, and they are solely responsible for the success of our projects and the firm as a whole.



# PORTFOLIO

From residential spaces to commercial projects, we do it all in the world of interior design.

We invite you to take a look at our gallery and explore some of our most beloved works.

- A Residential
- B Commercial
- C Retail

02

RESIDENTIAL

# Siddhivinayak Tower

Sanjay Shah

Client

Borivali, Mumbai

Location

9,000 Sq. Ft.

Size

A.1.0



A.1.1

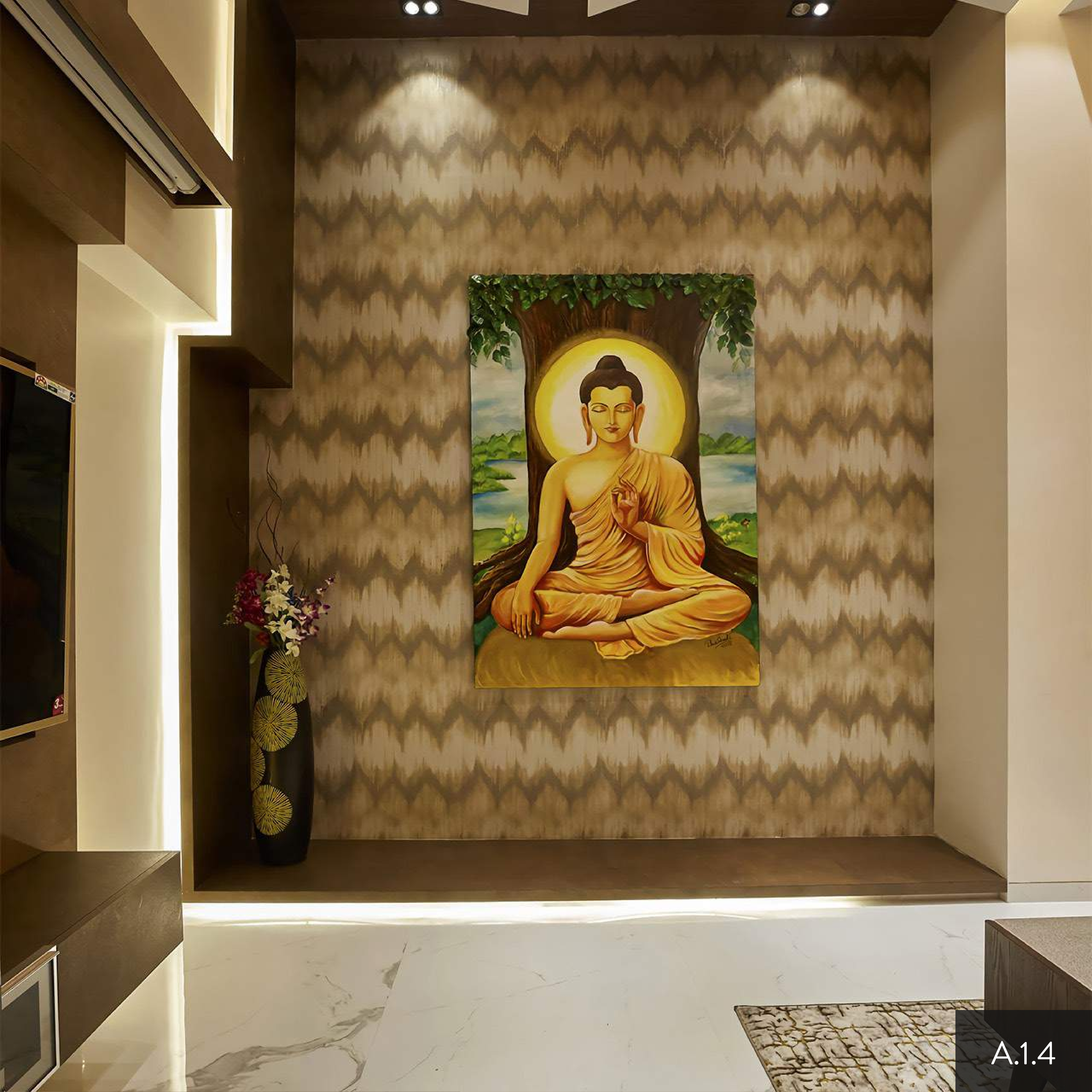


A.1.2



A.1.3





A.1.4



A.1.5

RESIDENTIAL

# Kalpataru Gardens

Bhavin Timbadia

Client

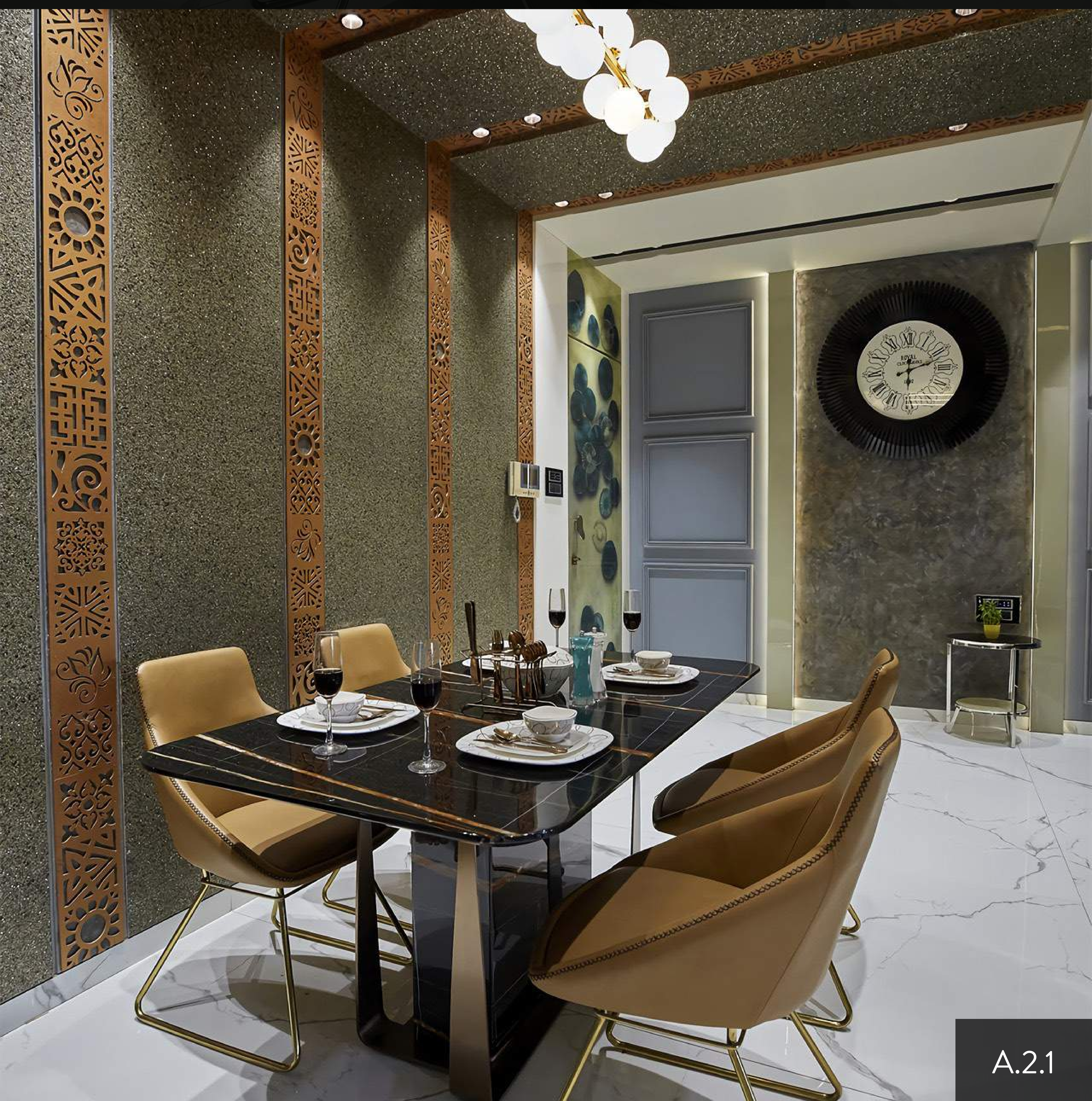
Kandivali, Mumbai

Location

900 Sq. Ft.

Size

A.2.0



A.2.1



A.2.2



A.2.3



A.2.4



A.2.5

RESIDENTIAL

# Evita Empress

Vishal Bramhabhatt

Client

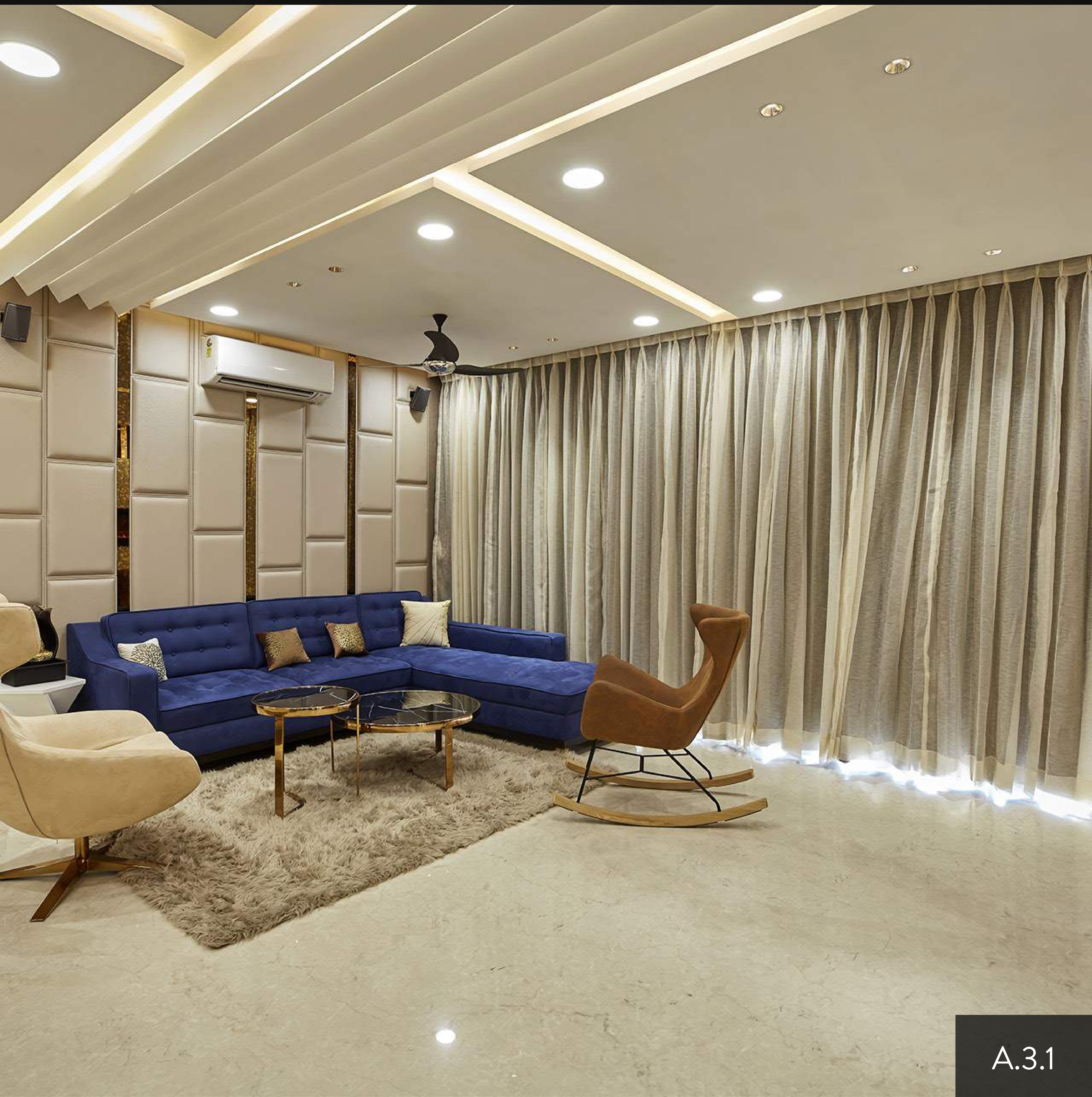
Parel, Mumbai

Location

1,450 Sq. Ft.

Size

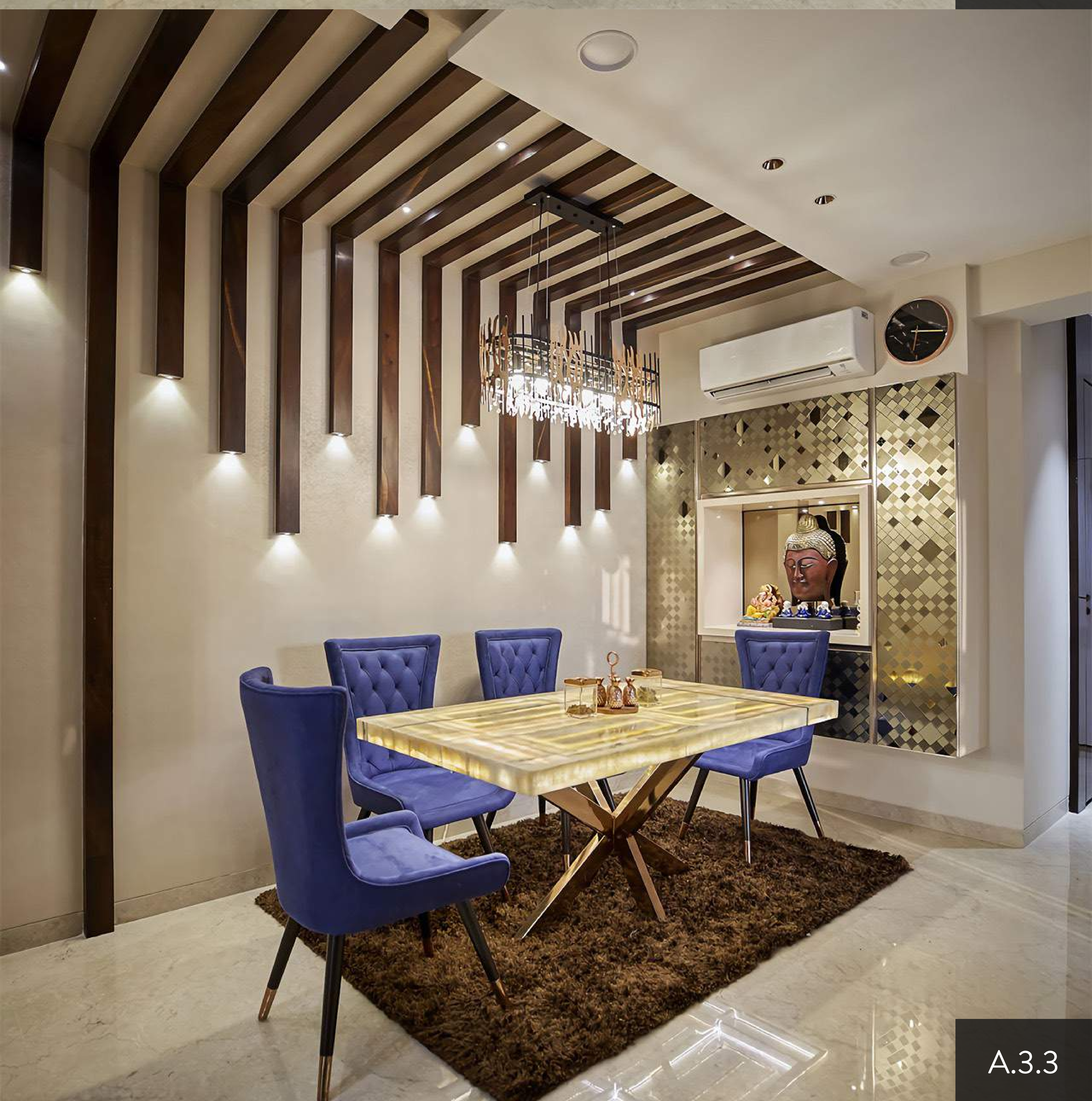
A.3.0



A.3.1



A.3.2



A.3.3



A.3.4



A.3.5

RESIDENTIAL

# Ibis Tower

Ankur Joshi

Client

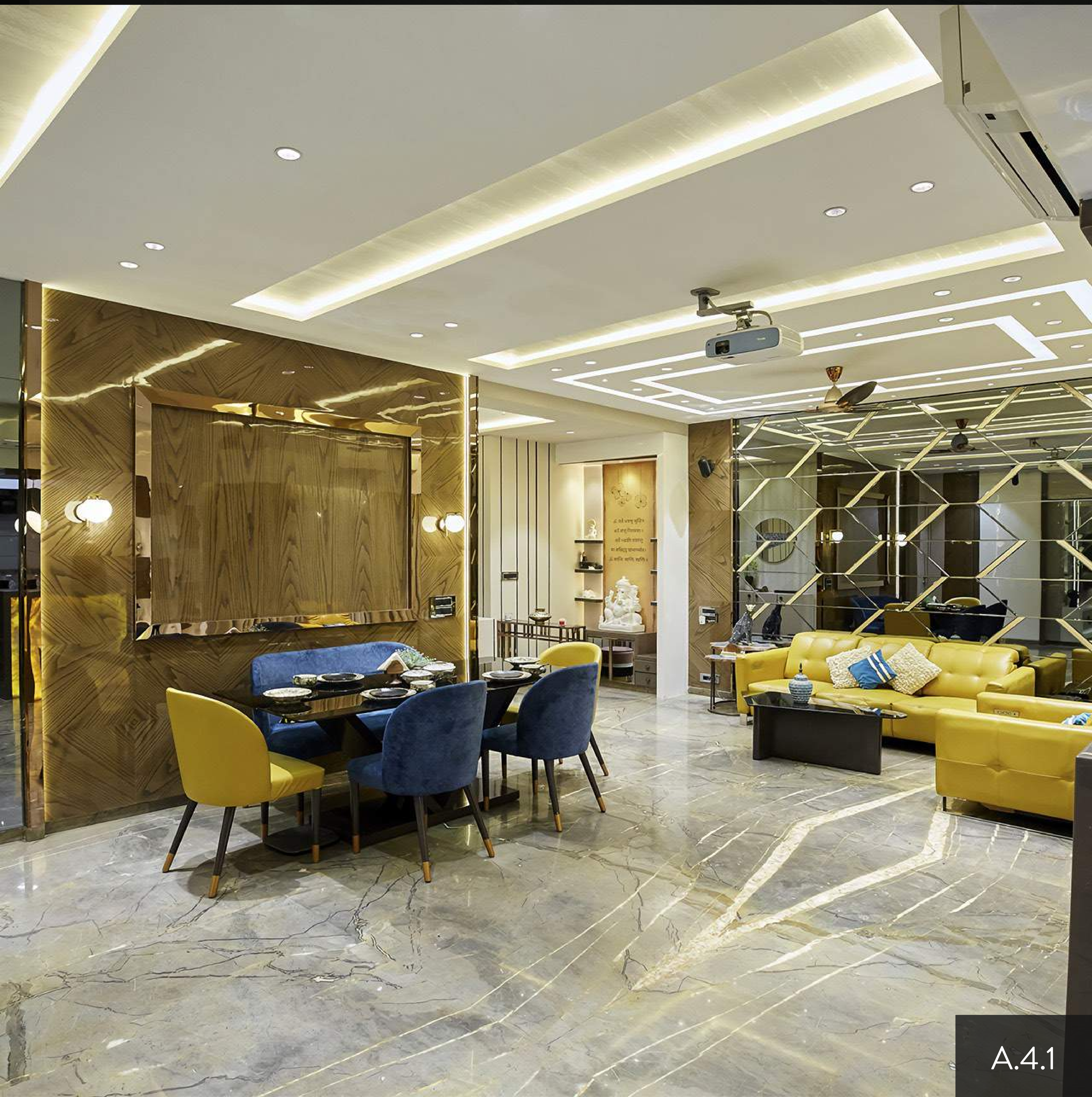
Kandivali, Mumbai

Location

1,150 Sq. Ft.

Size

A.4.0



A.4.1





A.4.2



A.4.3



A.4.4



A.4.5

RESIDENTIAL

# Ibis Tower

Nayan Mehta

Client

Kandivali, Mumbai

Location

1,150 Sq. Ft.

Size

A.5.0



A.5.1



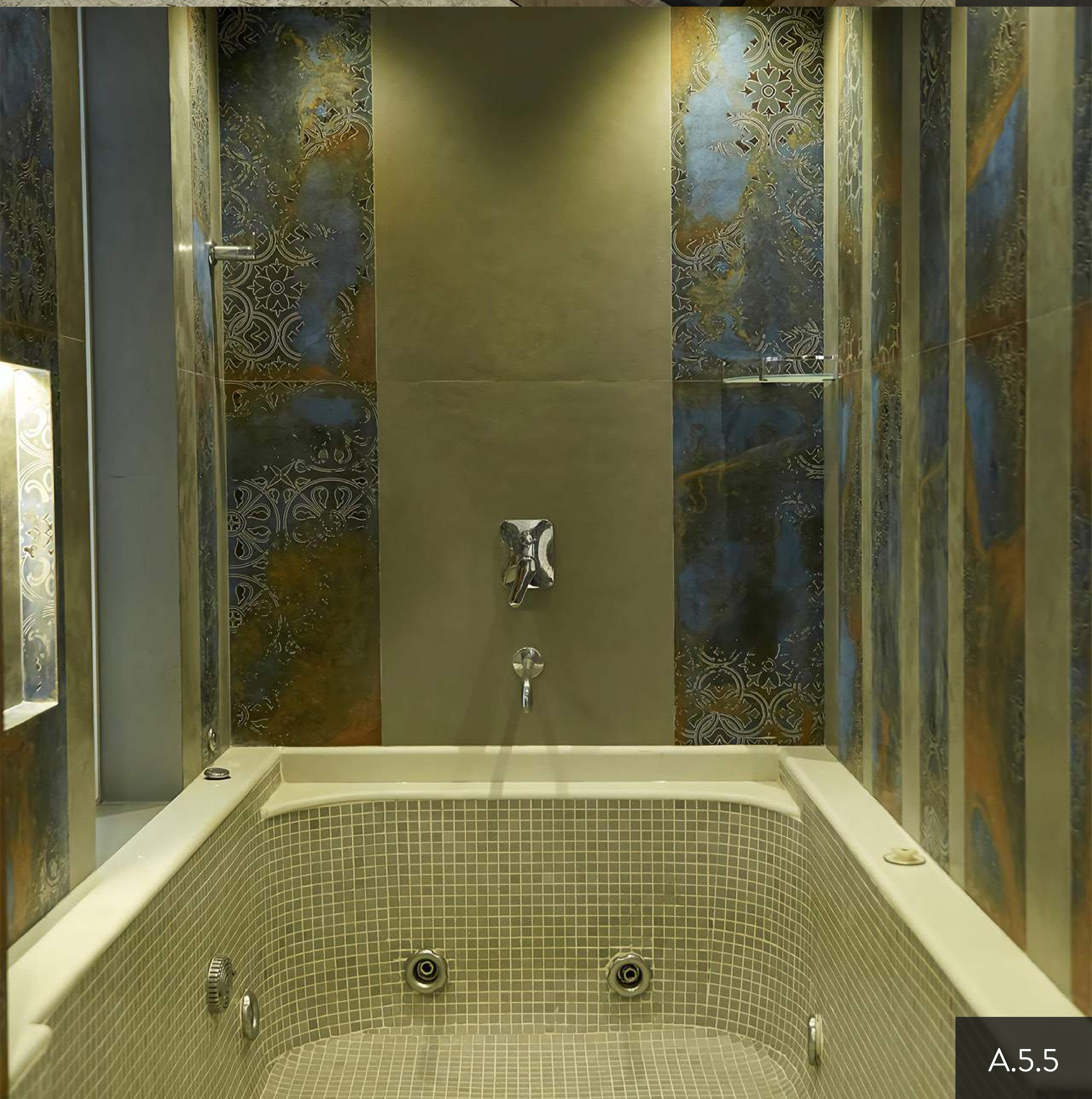
A.5.2



A.5.3



A.5.4



A.5.5

COMMERCIAL

# The Royal Atlantis Banquets

Manish Shah

Client

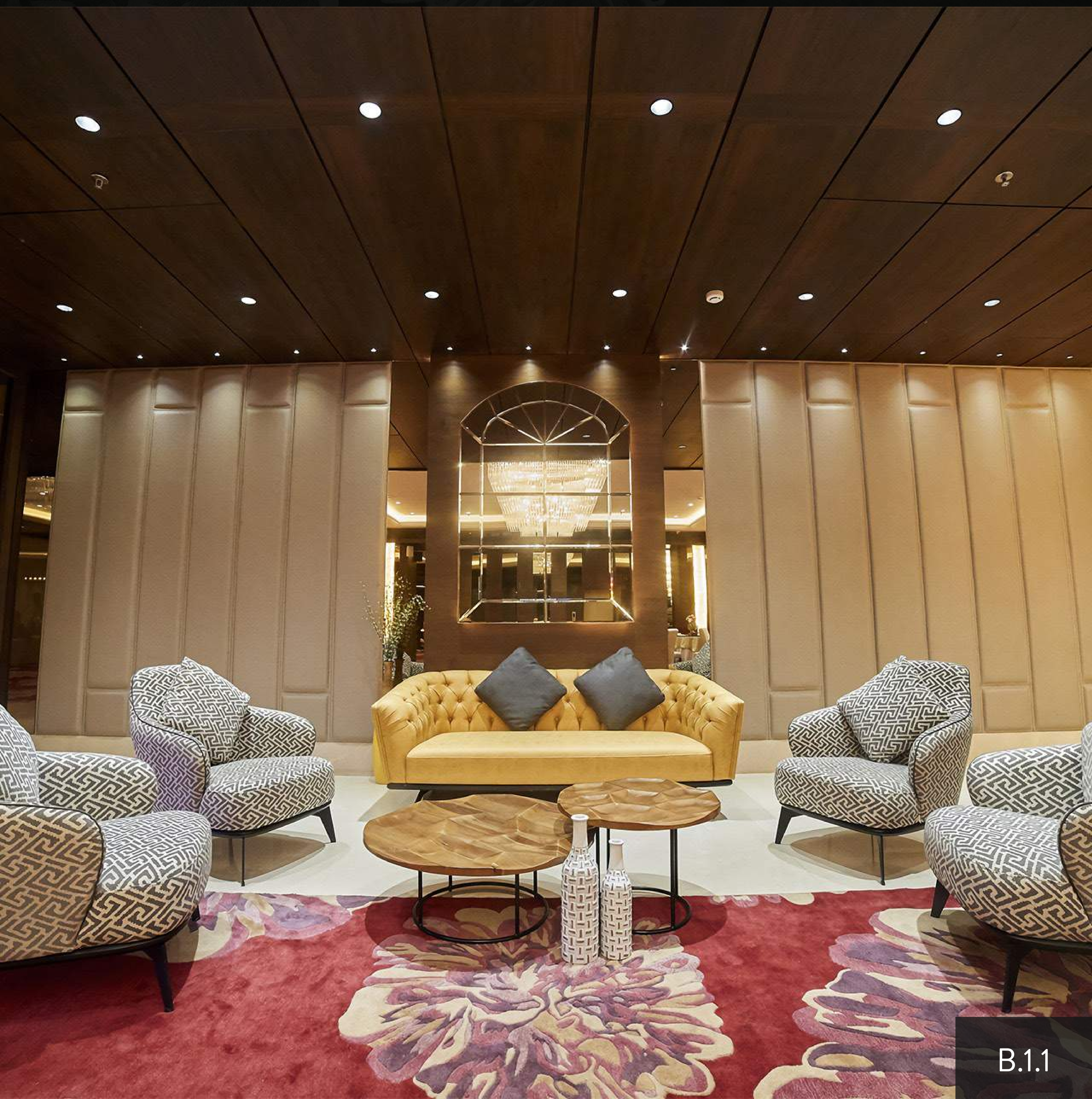
Borivali, Mumbai

Location

14,000 Sq. Ft.

Size

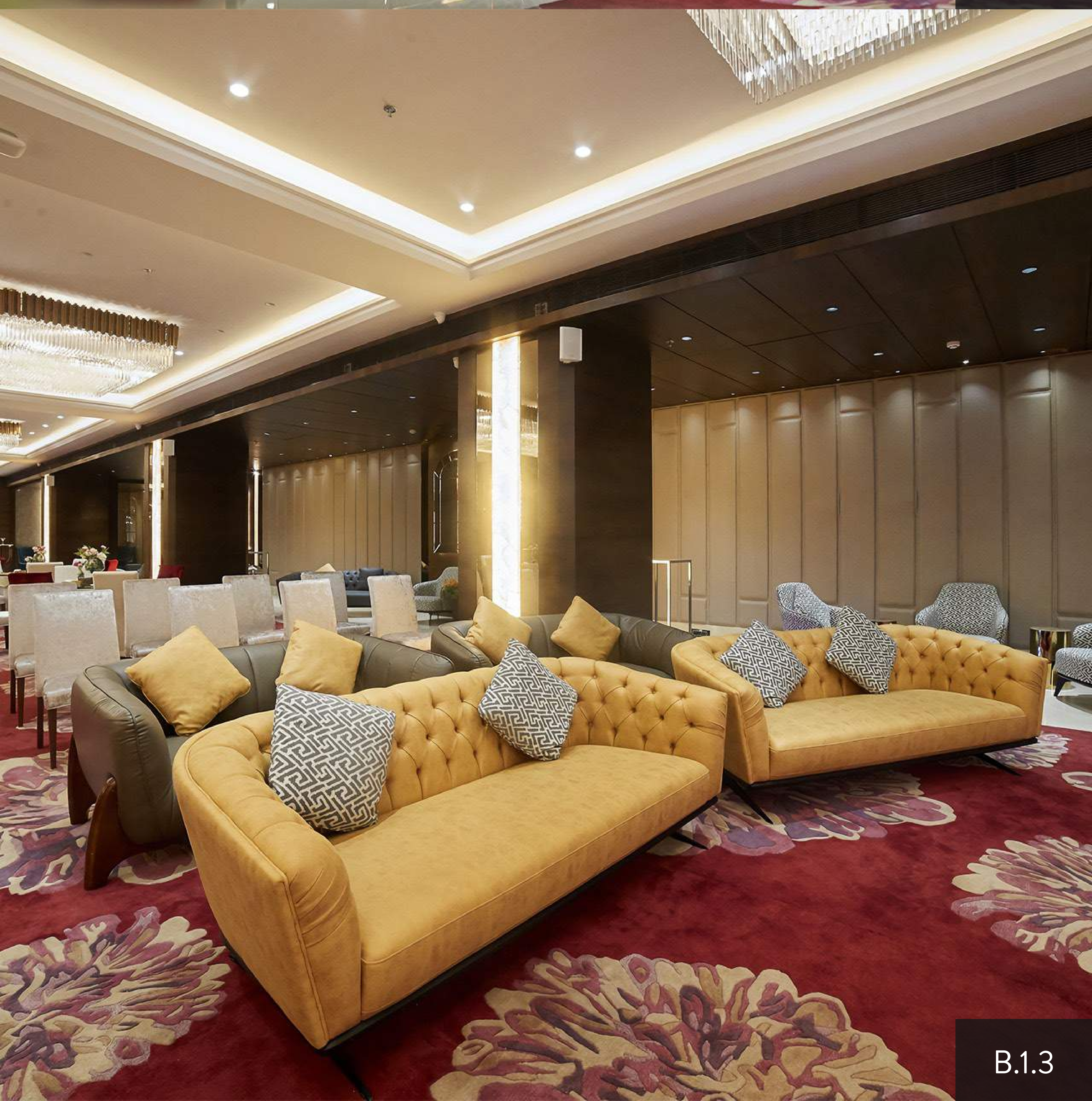
B.1.0



B.1.1



B.1.2



B.1.3



B.1.4



B.1.5



COMMERCIAL

# Escobar

Urmish Shah

Client

Kinshasa, Africa

Location

6,600 Sq. Ft.

Size

B.2.0



B.2.1



B.2.2



B.2.3



B.2.4



B.2.5

COMMERCIAL

# Firengui

Urmish Shah

Client

Kinshasa, Africa

Location

6,000 Sq. Ft.

Size

B.3.0



B.3.1



B.3.2



B.3.3



B.3.4



B.3.5



COMMERCIAL

# TANDOOR

Urmish Shah

Client

Kinshasa, Africa

Location

2,850 Sq. Ft.

Size

B.4.0



B.4.1



B.4.2



B.4.3





B.4.4



B.4.5

RETAIL

# Boss & Canali

Urmish Shah

Client

Kinshasa, Africa

Location

1,700 Sq. Ft.

Size

C.1.0



C.1.1



C.1.2



C.1.3

CANALI BOSS  
HUGO BOSS



C.1.4

BOSS BOSS CANALI



C.1.5

RETAIL

# Boss Armani

Urmish Shah

Client

Kinshasa, Africa

Location

900 Sq. Ft.

Size

C.2.0



C.2.1



C.2.2



C.2.3



C.2.4



C.2.5

RETAIL

# Hackett & Faconnable

Urmish Shah

Client

Kinshasa, Africa

Location

900 Sq. Ft.

Size

C.3.0



C.3.1





C.3.2



C.3.3



C.3.4

*Façonnable*

— FRENCH RIVIERA —



C.3.5



# TESTIMONIALS

We pride ourselves on our excellent service and ability to deliver.

If you want to get an idea of the experiences that past clients have had with our services, we suggest you take a look at our client testimonials.

03

“I had a really good experience with Pratik and his 360 Feet Design team.”

- Jignesh Pathak, Monarch Pharma

“We had visited many places, met many interior decorators and architects, yet we had never seen such a clear vision of design and modern concept until now”

- Harmesh Vithlani, Co-Founder - KLIQ International

“Pratik sir is completely dedicated to his work, is very passionate about it, and we are very happy with him.”

- Harnish Joshi, Investment Banker

“He never refuses any kind of work. If he says it will be done, it will undoubtedly be done by him.”

- Rajesh Doshi, Atlanta Estate Agency

“What we had long envisioned as our ideal home is exactly what Pratik Bhai has built for us.”

- Jetal Soni, Singer

“Pratik Bhai is a man of his words, he finished the entire project in eight months, just as he had promised us.”

- Ketan Soni, Raj Computers

“The best thing about his team is that their execution is really, really good, and their finishing is also really, really good.”

- Pranay Shah, Sr. Vice President - Tata AIG

“He surprised us with things we hadn't even asked for. He's done everything on his own initiative.”

- Mrs. Shradha Maniar, RM Steel

“Everyone I meet, everyone who comes to our house, we only tell them one thing: if you want a great flat, get it made by Pratik Bhai.”

- Ketan Soni, Raj Computers

“Congratulations to Pratik Bhai and the entire 360 Feet Team, I'm very happy for you guys. You've been building fantastic homes for all of us for a long time.”

- Ankur Joshi, Myntra Designs

# SERVICES

We're a full-service Interior Design studio. We handle everything from the initial stages of visualizing ideas to climbing ladders and watching the project come to life on the construction site.

When we begin work on a project, you can expect it to go through five major stages, which comprise the entire interior design process.

04




Strategic  
Planning



Concept &  
Prototyping



Design  
Development



Documentation &  
Construction



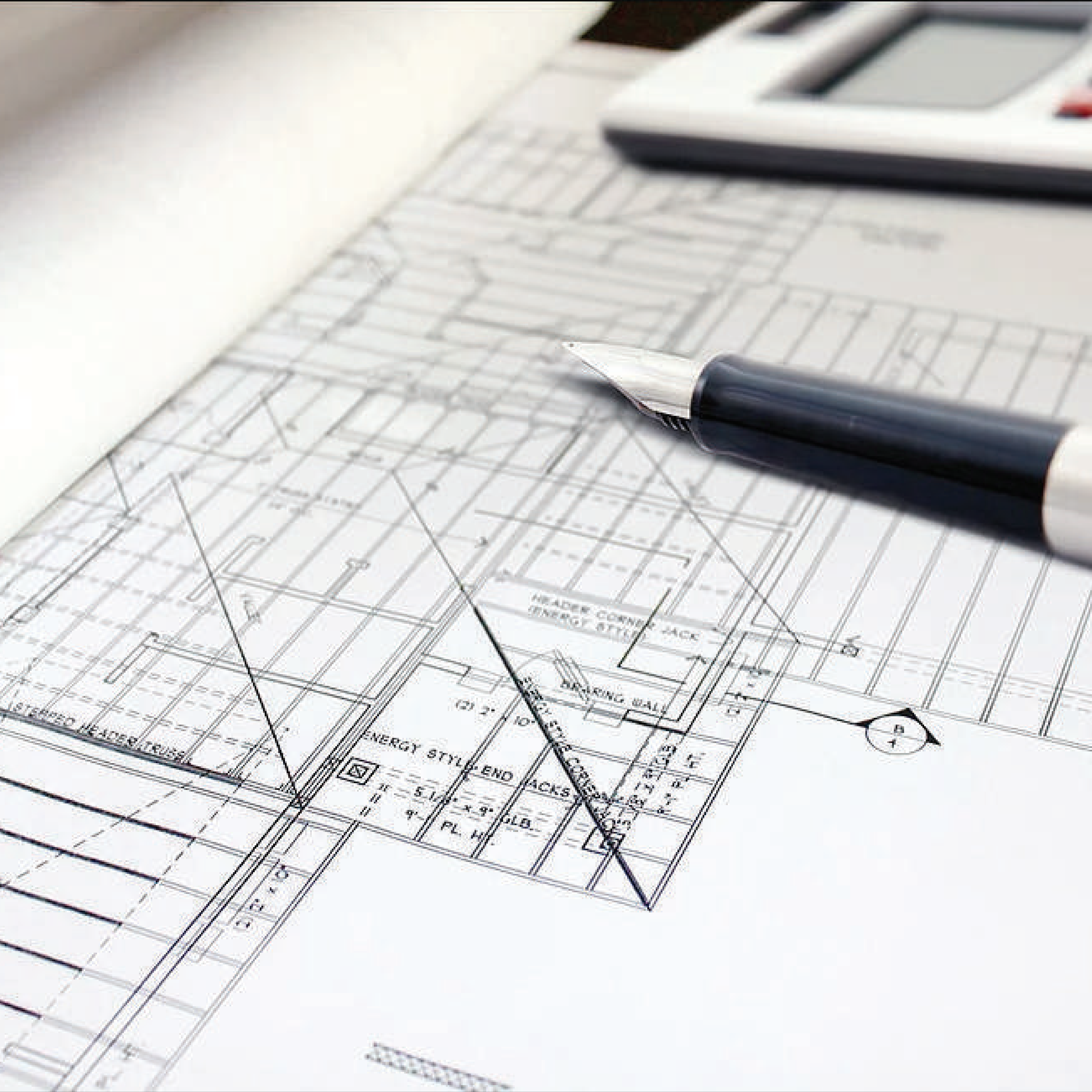
Maintenance &  
Administration



# STRATEGIC PLANNING

When we take on an interior design project, the first thing we do is inspect the job site and do a walkthrough. Interior design, unlike construction, is a highly personal endeavor. To put ourselves in our clients' shoes, we must first get to know them.

Our experts learn about your family, your pets, the activities you enjoy, the environment of your home, and the way you like things in your home. We need to learn as much about you as possible in order to create a personalized design for you and your family.



# CONCEPT & PROTOTYPING

During the conceptual development phase, spaces are made functional so that they blend in well with the overall style. To facilitate this, new sketches are created which transform the space planning.

These drawings are drawn to scale and sent for you to approve. Once you approve the spacing, most of the heavy lifting is done!





# DESIGN DEVELOPMENT

Adding details to your design is the focus of the design development phase. The goal is to combine your approved design with your architectural style.

Everything we choose, from finishes to flooring, tile, and wooden pieces, is in keeping with the design theme you approved.

These are illustrated via new proposed floor plans, detailed drawings, wall elevations, and other visual aids.



# DOCUMENTATION & CONSTRUCTION

Once you approve the design, we begin working on the construction drawings set. These documents are essential for various contractors which will follow our lead, including but not limited to carpenters, plumbers, tile setters, electricians, etc.

Interior construction documentation sets will give them everything they need to execute the design flawlessly.



# MAINTENANCE & ADMINISTRATION

We do all the hard administrative legwork for you. We go to the city building permit office, we apply for the permit, we deal with the city review process, and we then pull the construction permit for you.

We also have procedures in place to ascertain that all the materials specified in the design are ordered correctly. Once all the materials are approved, along with the cost of the construction project, we begin construction.



Studio No. 2, 1st Floor, Hiramani Enclave,  
Road No. 3, Ashok Nagar, Above Bank of  
Baroda, Kandivali - East, Mumbai - 101.

[www.360feetdesignstudio.com](http://www.360feetdesignstudio.com)

[360feetdesignstudio@gmail.com](mailto:360feetdesignstudio@gmail.com)

+91 922 442 8254

[f](#) [@](#) [▶](#) [in](#) [✈](#) / 360feetdesigns

Copyright © 2021 | 360 Feet Design ® | All Rights Reserved.

Designed by : TMW +91 98205 98559